

**FLOWSERVE**

**KiK | MPI**  
Kennis- en innovatiecentrum  
Maintenance Procesindustrie

## Verkorten reparatiecyclus pompreparaties









© Can Stock Photo - csp40922549





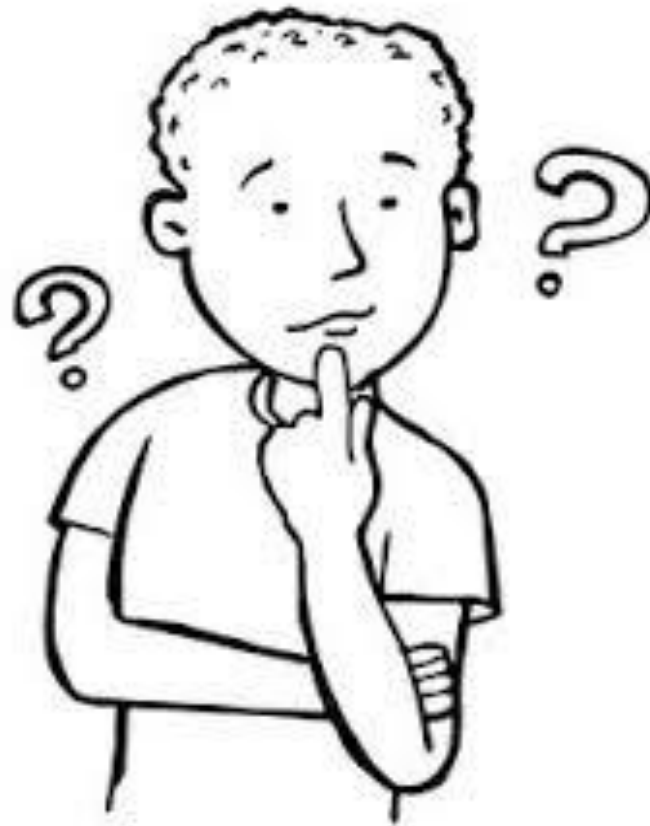
- Voldoen aan de huidige wet en regelgeving
- Voldoen aan onze eigen specificaties
- Documentatie van assets op orde
- Spareparts van assets op orde





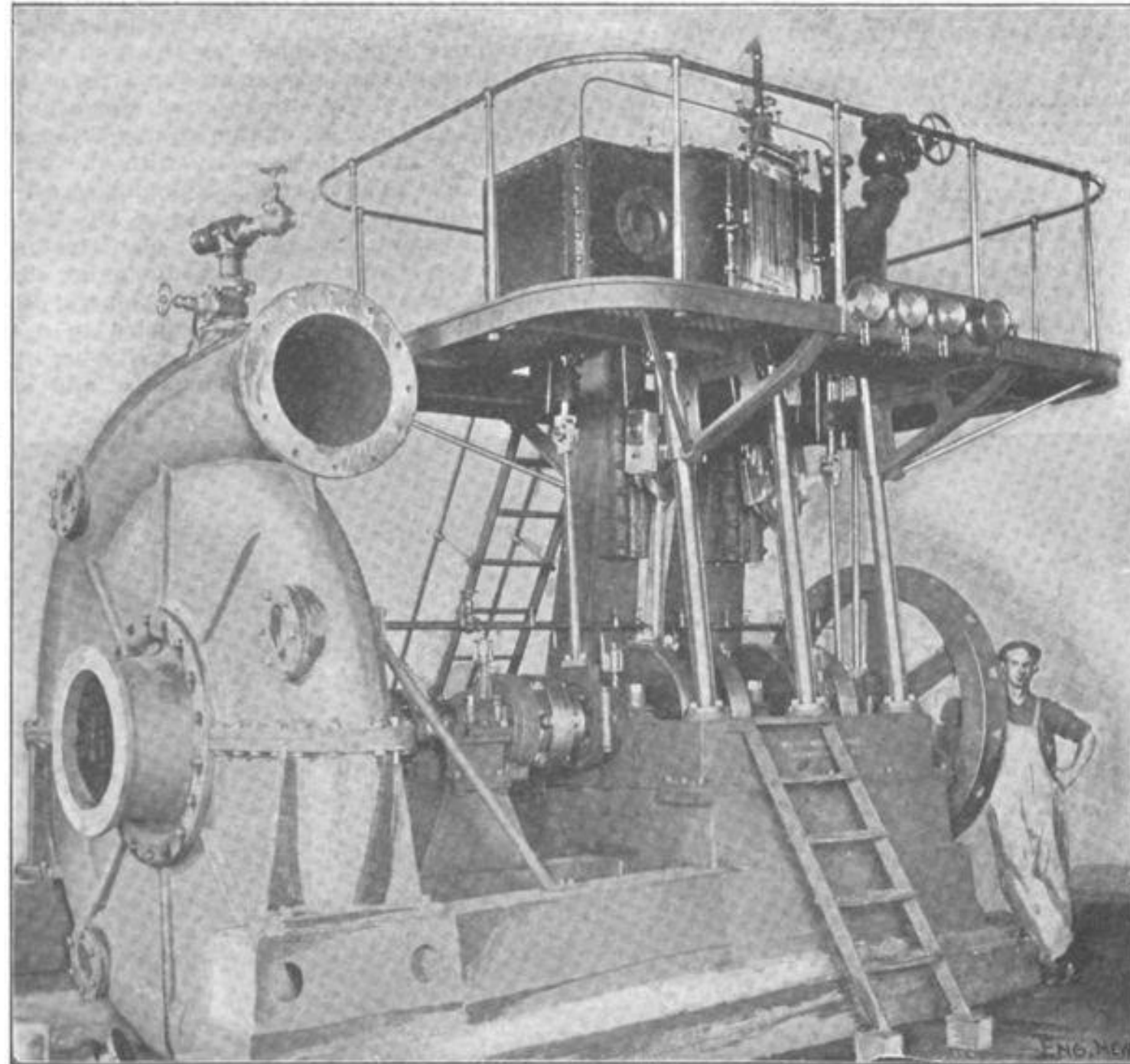


# Scoping





# History



# Proces







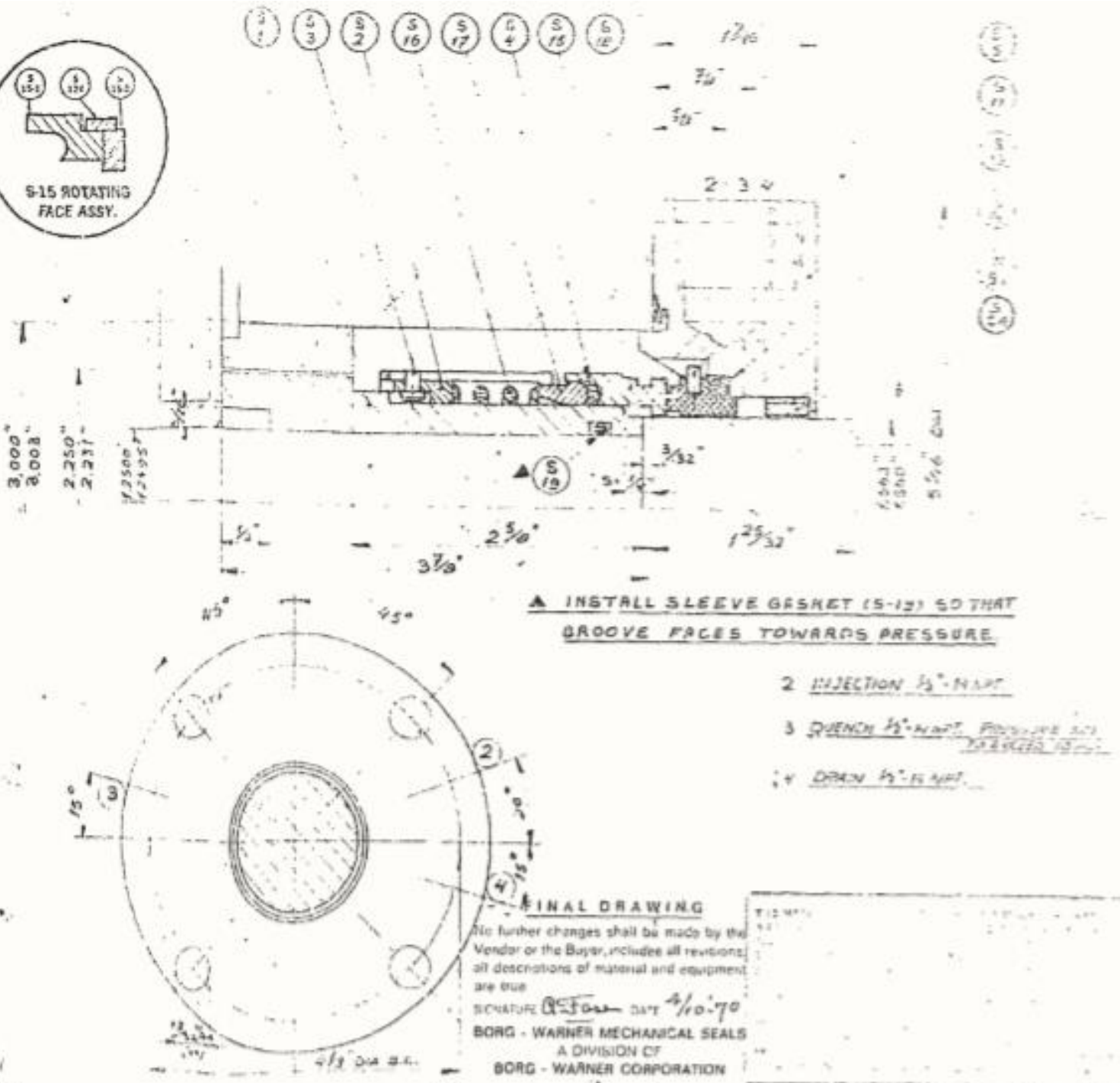
DATA SHEET AND BILL OF MATERIAL

QTY	UNIT	DESCRIPTION	PART NO	CODE	MIL N	QTY
2	S	1 SHAFT SLEEVE	35285	DB	316	
2	S	2 SEAL DRIVE	616215	DB	316	
4	S	3 DRIVE PIN	616214	DB	316	
2	S	4 U-CUP	616216	GT	TEFLON	
2	S	5 LOCK PIN	5' DIA - 2532 LOCK	D.S	316	
2	S	11 SEAL FLANGE	100731	LB	316	
2	S	13 SEAT GASKET	620333	GT	TEFLON	
2	S	14 STATIONARY FACE	616211	GE	CARBON-B	
		S-15 ROTATING FACE	616212			
2	S	15 SPRING	616213	DB	316	
2	S	16 SPRING HOLDER	661750	DB	316	
2	E	12 FLANGE GASKET	568235	GT	TEFLON	
2	E	19 SLEEVE GASKET	568213-A	GT	TEFLON	
2	S	24 FLANGE BUSHING	833954	GT	TEFLON	
2		D34C-RMP RING	833955	DB	316	
2	S-15-1	ROTATING FACE BODY	153142	DB	316	
2	S-15-2	ROTATING FACE WAFER	665307	LY	TUNG. CARB V	
1		S-124 LOCKRING	665386	DB	316	
1		CYCLONE SEPRATOR	10043	XX	316	

• AIRTEST TO 20 PSI

SEAL MODEL - UX-1730 MATERIAL CODE - SNTA  
 SIGHTS S.O. PLANTS. QUOT ORDER NO 1276-005  
 ADDRESS STATIONSPL. 2, SCHIEDAM  
 BUYER NAME OXIRANE CHEMIE NEDERLAND  
 LOCATION SEINE HAVEN ROTTERDAM.  
 ITEM NO G-331-9/8 PUMP SERIAL NO 700E0084-0085  
 SPEC SHEET NO 1356-G-100 STUFFINGBOX DWG NO 1A-2491  
 PUMP HLL & TYP H<sub>2</sub>-2-884 IN 4x6x3 1/2 H IN. SH 2930  
 PUMP MFG O.J. N.V. STUFFINGBOX PRESSURE 508.2 PSIA  
 LIQUID ORGANICS SUCTION PRESSURE 508.2 PSIA  
 TEMPERATURE 10.6°C = 51.3°F V.P. 490.7 PSIA  
 DATE APR 3-70 INVOICE NO. 700E0084-85 MADE BY R. FASEN

RECOMMEND STAKE PARTS  
 WHEN ORDERING PLEASE REFER TO THE SERIAL NO. OF MODEL AND PART NO.



VIEW A

SCALE - 1:1

US 0401R No 700E0084-85

FORM DRAWING No DA-2349-R







TRADE?



SURE!



