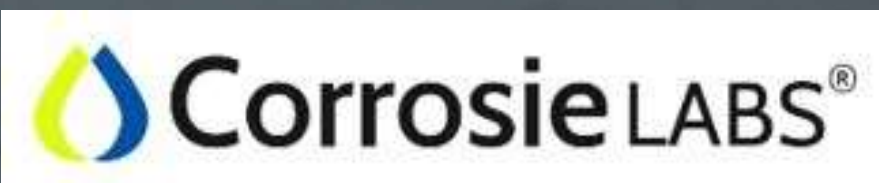




Interreg
Vlaanderen-Nederland
Europees Fonds voor Regionale Ontwikkeling



KAEFER



Ben Lodde | 29/06/2021

KAEFER. When it counts, count on us.



WHO IS KAEFER ?



THAT'S US

It is our mission to be the **most reliable** and **efficient** provider of **technical industrial services**

20+

languages

30+

countries

50+

nationalities

1 family

1,500,000,000

turnover in € (2020)



FOR MORE THAN 100 YEARS



1918

Foundation of our company by Carl Kaefer with the aim to provide insulation for ships

1950

First contract from the oil industry in Bremen, Germany

1955 ...

From Bremen to the world – KAEFER's internationalisation starts with its subsidiary in Finland

... 1973

Maintenance contract DOW Terneuzen

2011

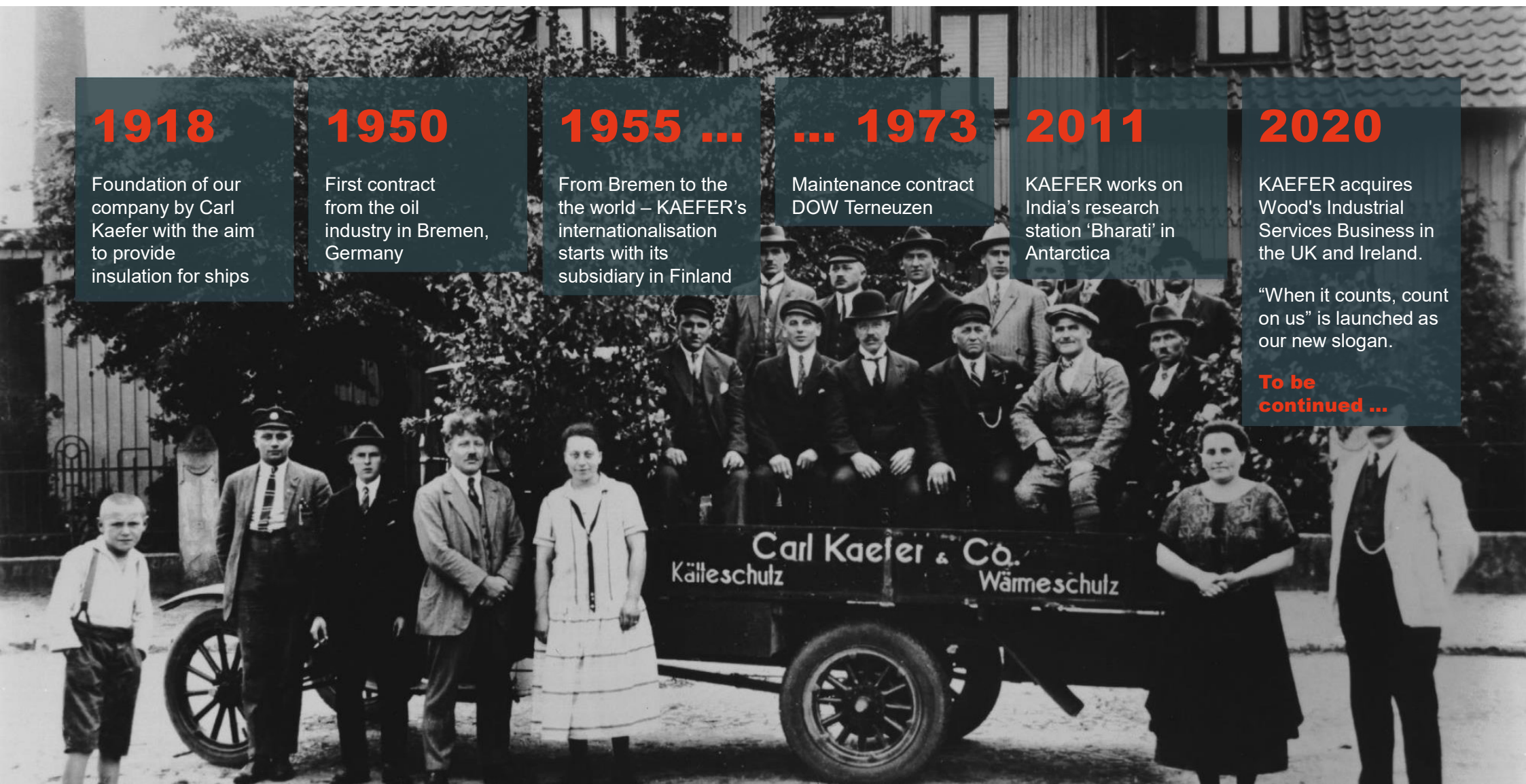
KAEFER works on India's research station 'Bharati' in Antarctica

2020

KAEFER acquires Wood's Industrial Services Business in the UK and Ireland.

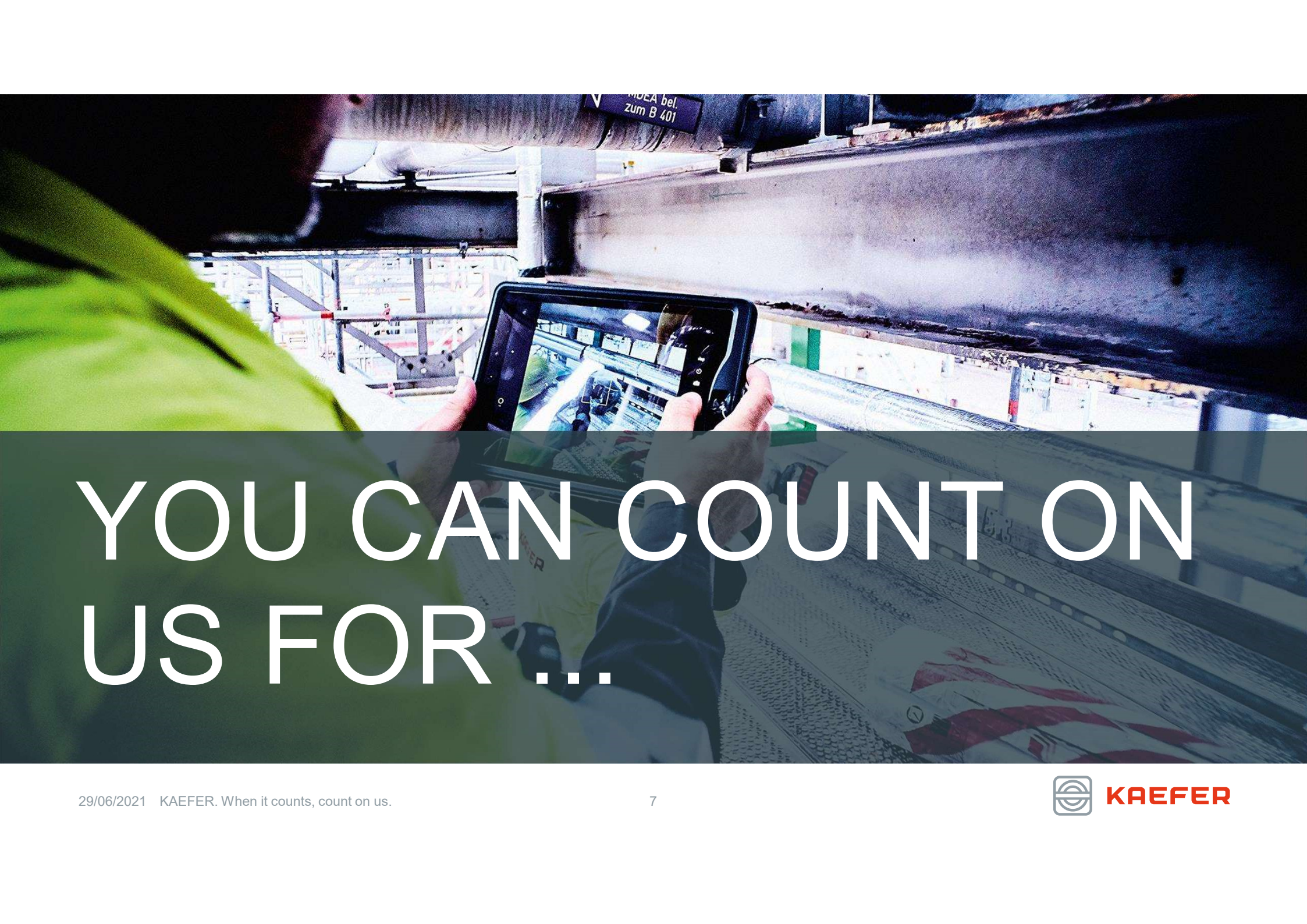
"When it counts, count on us" is launched as our new slogan.

To be continued ...



THIS IS OUR STRUCTURE





YOU CAN COUNT ON US FOR ...



OUR CORE SERVICES



31%



28%



7%



5%

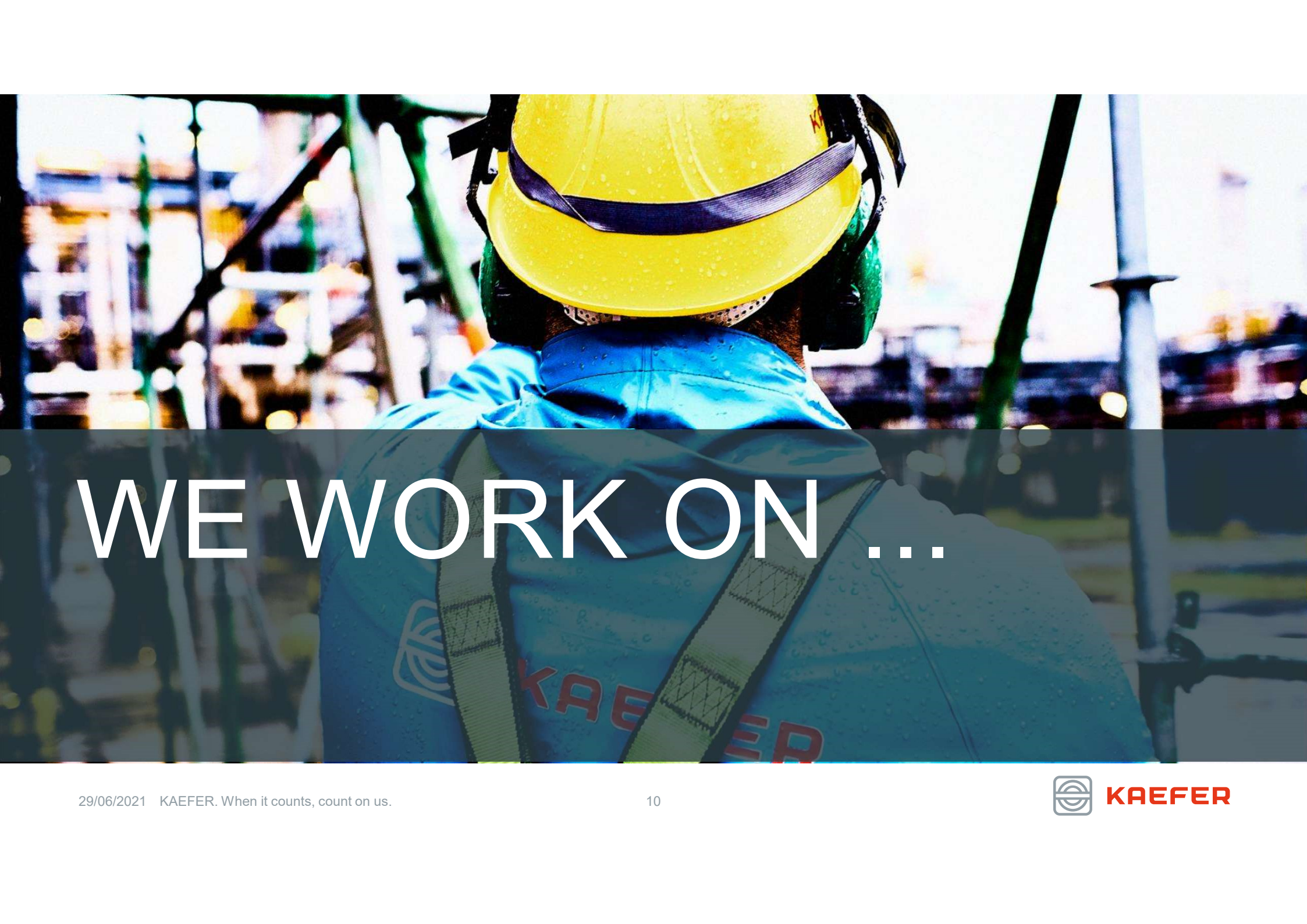


4%

75% of total turnover. The remaining 25% are generated by related services.

OUR SERVICE PORTFOLIO

Scaffold Training **Insulation** Rope Access Training
Access Solutions Thermal Insulation Electromechanical Work
Rope Access Facades CUI Management Services **Mattresses**
Thermography/Energy Audits **Scaffolding** Glycol and Heat Tracing
Renewables **Refractory Passive Fire Protection** Metal Construction
Offshore and Industry Maintenance Facilities Services
Asbestos Solutions Noise and Vibration Prognosis **Fire Safety Products**
System Testing in own Laboratories Mechanical Work
Manpower Supply **Interior Outfitting** Design & Engineering **HVAC**
Non-Destructive Testing Scaffold Design **Surface Protection**
Industrial Cleaning Cold Storage Doors Materials Supply **Cryogenics / LNG**
Mega Yacht Refit Civil Maintenance **Yacht Interior Design**



WE WORK ON ...



POWER PLANTS



REFINERIES

Electromechanical Work

**Surface
Protection**

Scaffolding

**Access
Solutions**

**Industrial
Maintenance**

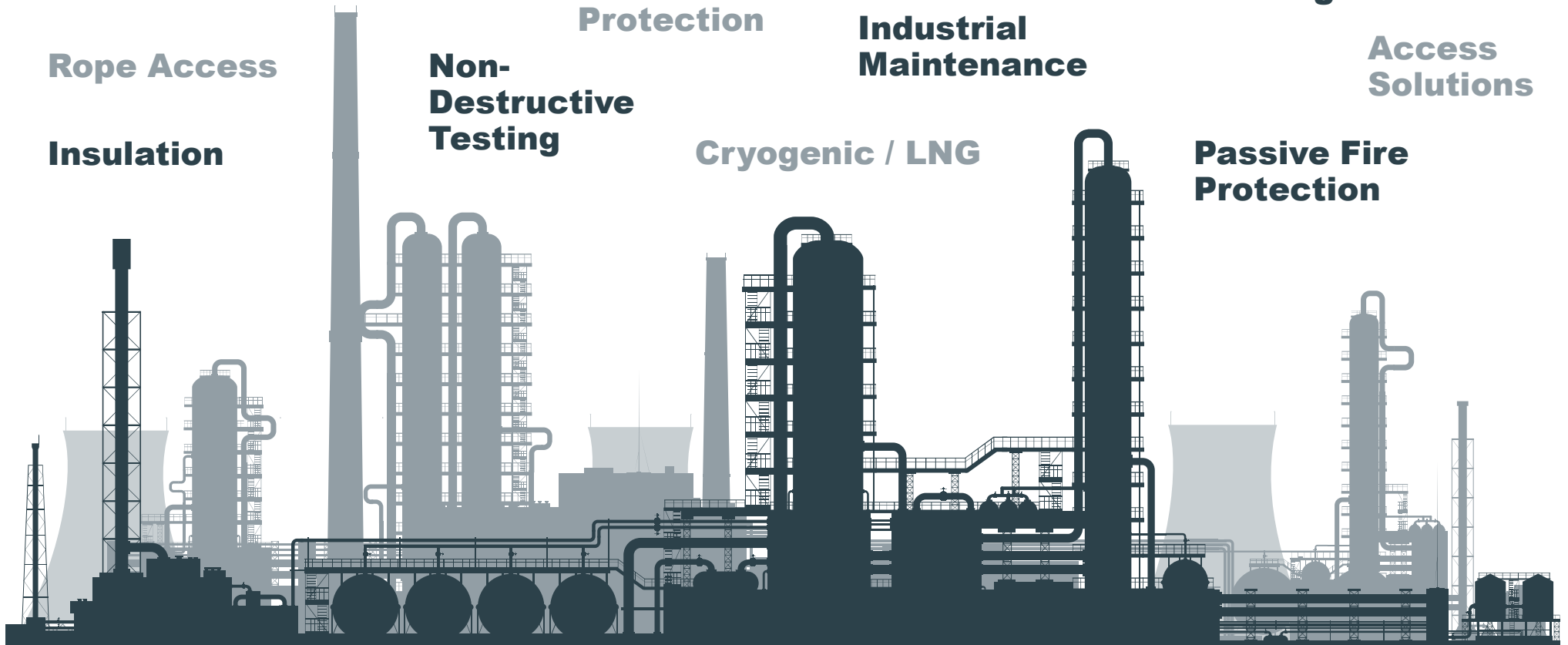
**Non-
Destructive
Testing**

Cryogenic / LNG

**Passive Fire
Protection**

Rope Access

Insulation



MINING

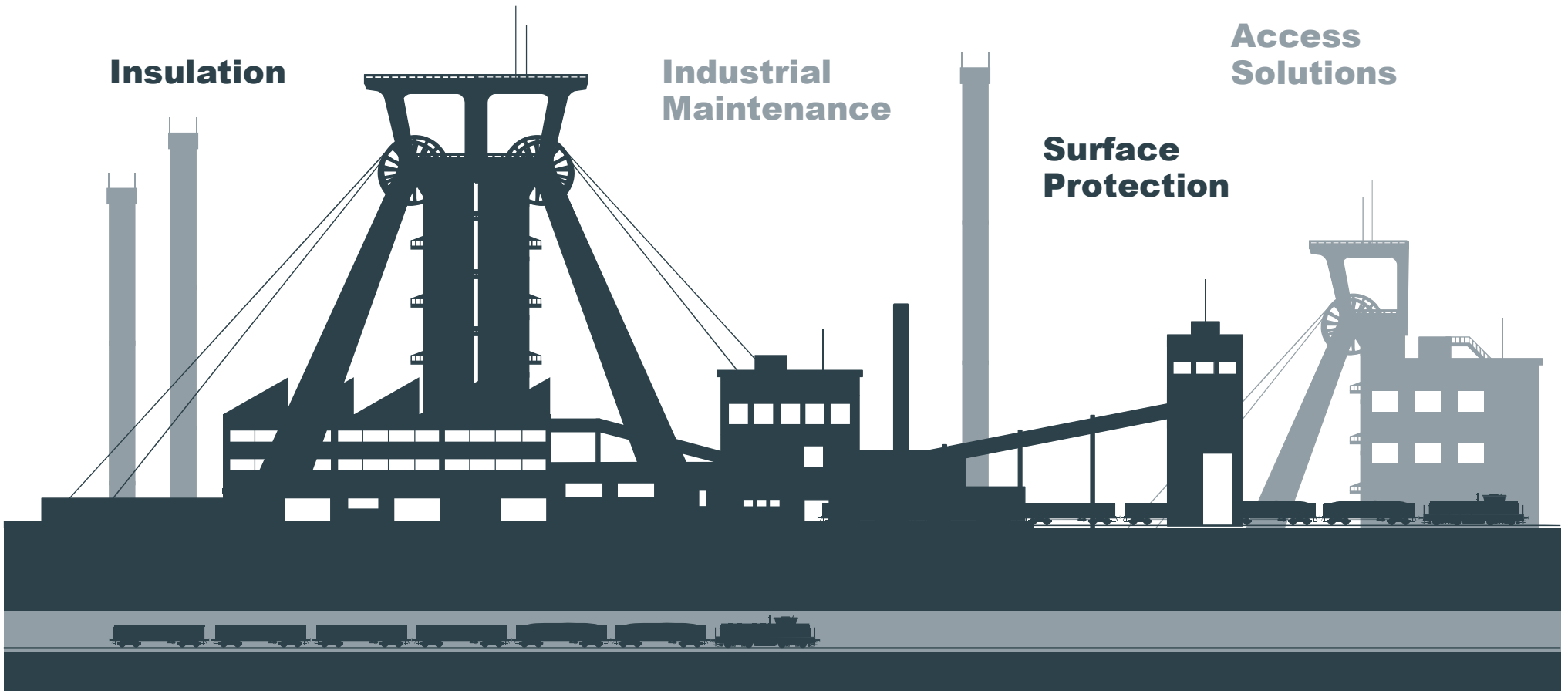
Electromechanical Work

Insulation

**Industrial
Maintenance**

**Surface
Protection**

**Access
Solutions**



OFFSHORE PLATFORMS

Insulation

**Surface
Protection**

**Passive Fire
Protection**

Rope Access

**Access
Solutions**

**Industrial
Maintenance**

**Interior
Outfitting**

**Non-
Destructive
Testing**



SHIPS

**Passive Fire
Protection**

Insulation

HVAC

**Offshore
Maintenance**

**Yacht Interior
Design**

**Cryogenic Tanks &
Pipes / LNG**

**Interior
Outfitting**

**Mega Yacht
Refit**



BUILDINGS & TUNNELS

**Interior
Outfitting**

HVAC

**Civil
Maintenance**

**Metal
Construction**

**Passive Fire
Protection**

**Access
Solutions**



SERVING MANY INDUSTRIES

Merchant vessels **Cruise ships** Cement plants
River cruise ships Yachts **LNG, methanol and ethylene plants**
Chemical and petrochemical plants Energy from waste plants
Tunnels **Industrial facades** Copper mines
Refineries Thermal-solar plants **Offshore production platforms**
Ferrous and non-ferrous mines LNG and LPG vessels
Iron ore mines **Natural gas storage vessels** **Power plants**
Nuclear facilities **Offshore receiving terminals** Gold mines
Pipelines Ferries Naval vessels **Offshore drilling rigs**
Natural gas tank farms **Buildings**
Alumina mines **FPSO facilities**

THIS IS OUR STRUCTURE





KAEFER LABS CIE-TS

| 29/06/2021

KAEFER. When it counts, count on us.

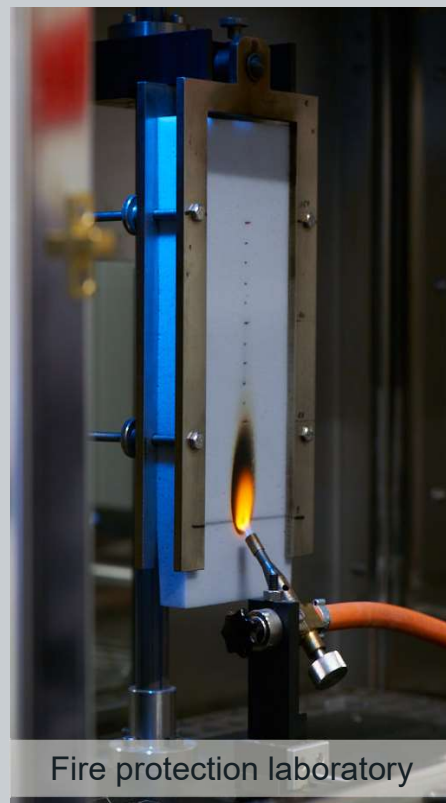


KAEFER

TESTING



Material testing laboratory



Fire protection laboratory



Climate testing laboratory



Acoustic testing laboratory

MATERIAL TESTING LABORATORY



Thermal Conductivity

CIE is KAEFER's in-house expertise for material testing offering:

- Thermal conductivity measurements using the Guarded Hot Plate method, acc. to DIN EN 12664 and DIN EN 12667
- For special applications: Hot Disk equipment

TEST RIG FOR LONG-TERM TEST

- System test for different insulation materials and coatings
- Testing temperature from 30 °C to 180 °C
- DN 150 pipeline, 30 m long
- Testing of measuring devices, sensors and monitoring systems
- Live measurements of operating and ambient temperatures



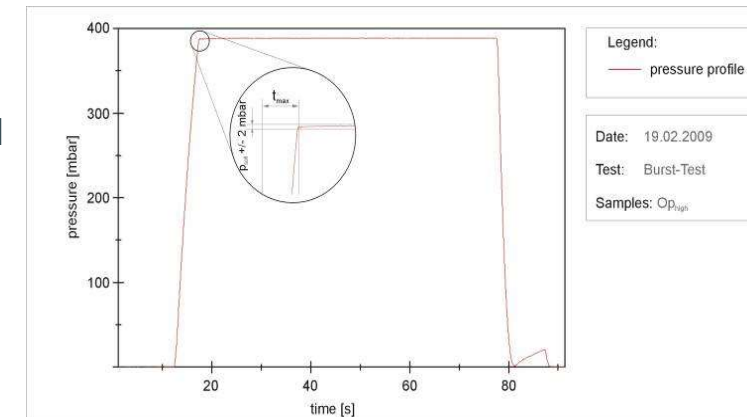
ENVIRONMENTAL TESTING

Air ducts Qualification Tests for Airbus Industries

The tests were carried out with a combination of the most extreme pressures and temperatures among the different operating conditions and life requirements e.g. inside an Airbus A400 M.

Test examples

- Leakage tests
- Pressurization tests with different pressure between – 250 and + 500 hPa
- Static pressurization tests under temperature influence between + 120 °C and – 75 °C
- Dynamic pressurization tests (fatigue test) with more than 200.000 load cycles under temperature influence
- Elastic deformation tests
- Ageing test (with different temperatures and humidity)



ACOUSTICS

Services

- Noise/vibration measurements, analysis
- Preparation of acoustical expertise and prediction
- Acceptance test with documentation
- Planning of noise protection measures, emission and immision, noise at working places
- Acoustical monitoring and support of development projects of the KAEFER divisions
- Own development projects (blow-off silencer)
- Training and seminars





WHEN IT COUNTS, COUNT ON US

KAEFER BENELUX



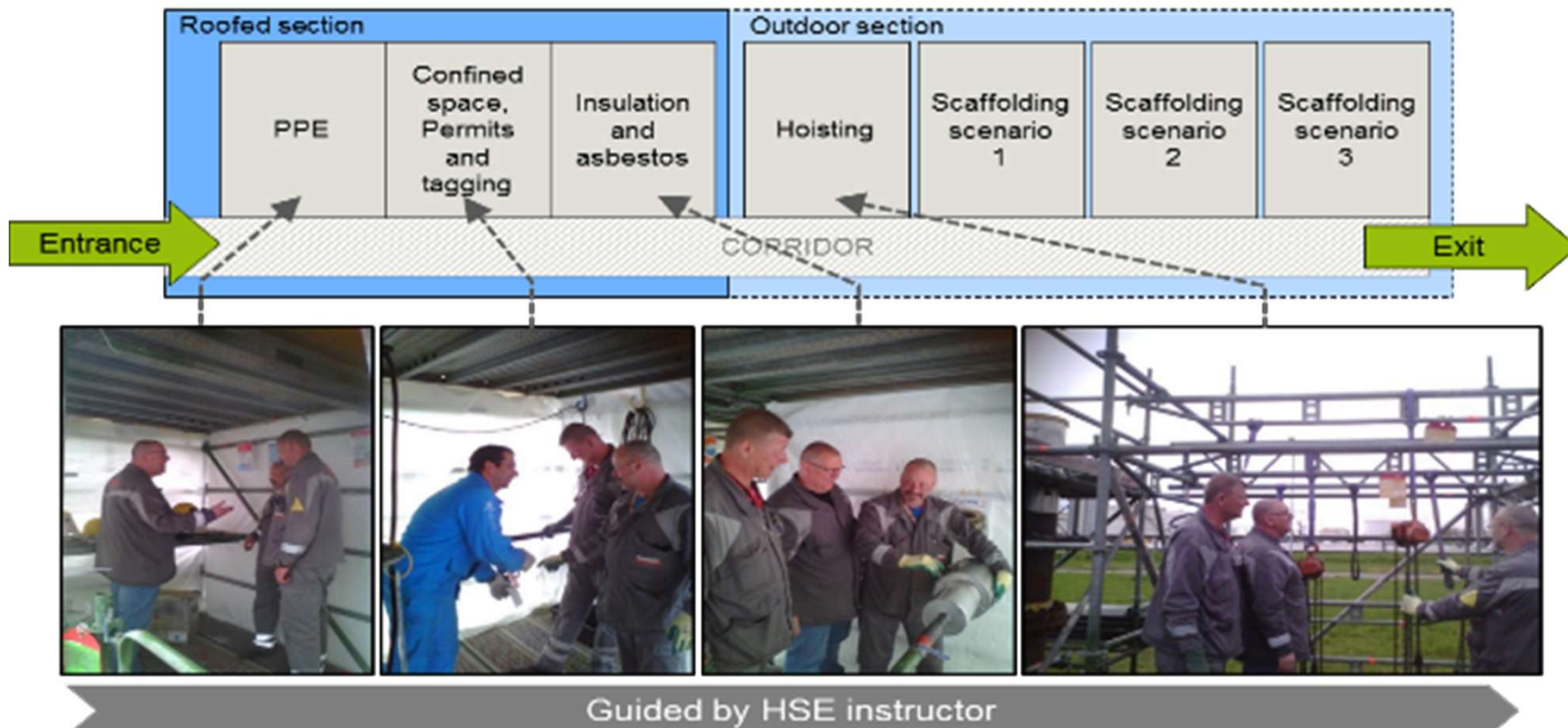
- > Head Office; Dordrecht
- > Approx. 450 direct workers, 900 incl. subcontracted
- > In 1973 KAEFER's been awarded a maintenance contract on DOW Terneuzen and has been on-site ever since.



WHAT IS KAEFER BENELUX DOING?



FIRST SAFETY STREET (COLAB WITH BIS)

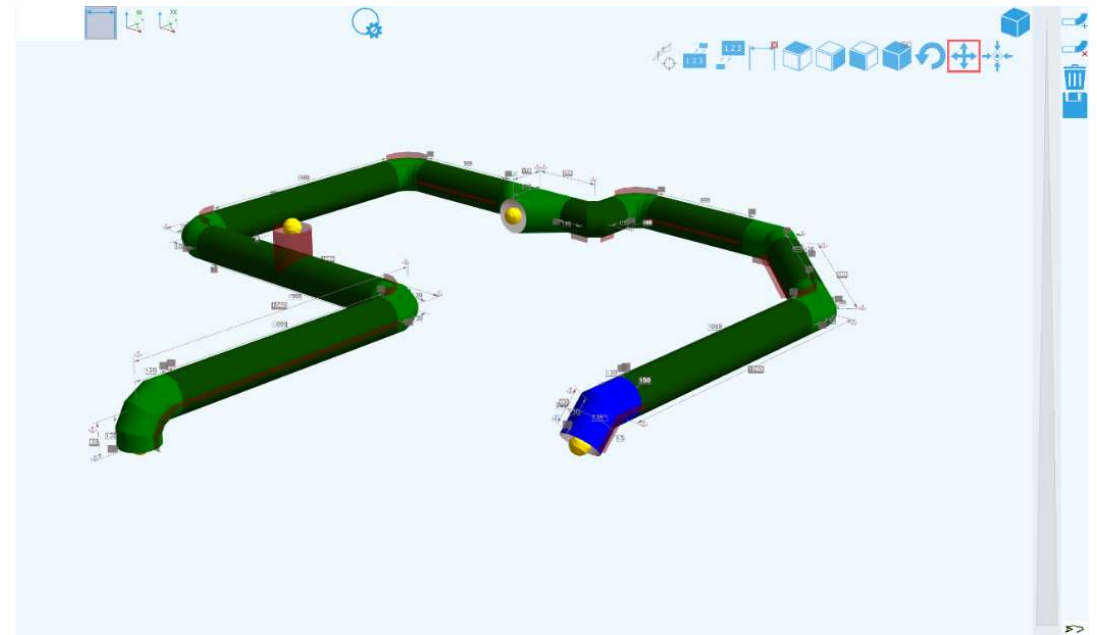
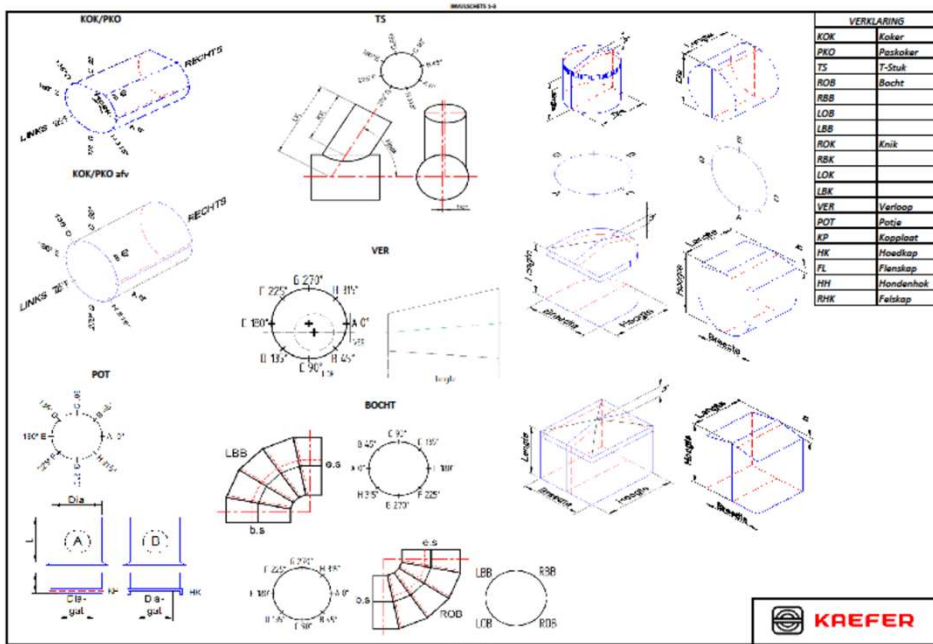


DIGITAL SAFETY STREET VR



DIGITAL SCOPING OF INSULATION

(DEVELOPMENT)



ISOconnect

AUTOMATED CUTTING OF CLADDING ON OUR 2 LASERCUTTING MACHINES





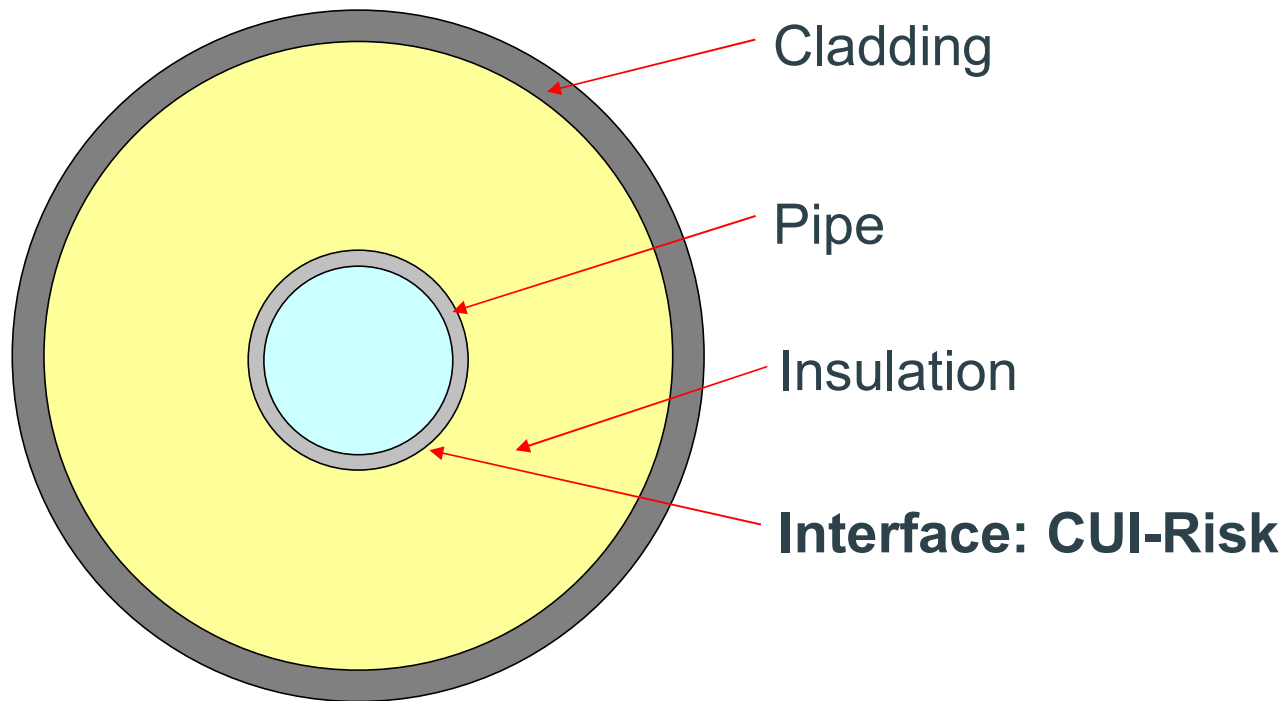
INVOLVEMENT IN KIC/MPI CORROSIONELABS

WE ARE A FULL PROJECT PARTNER IN CORROSIONELABS

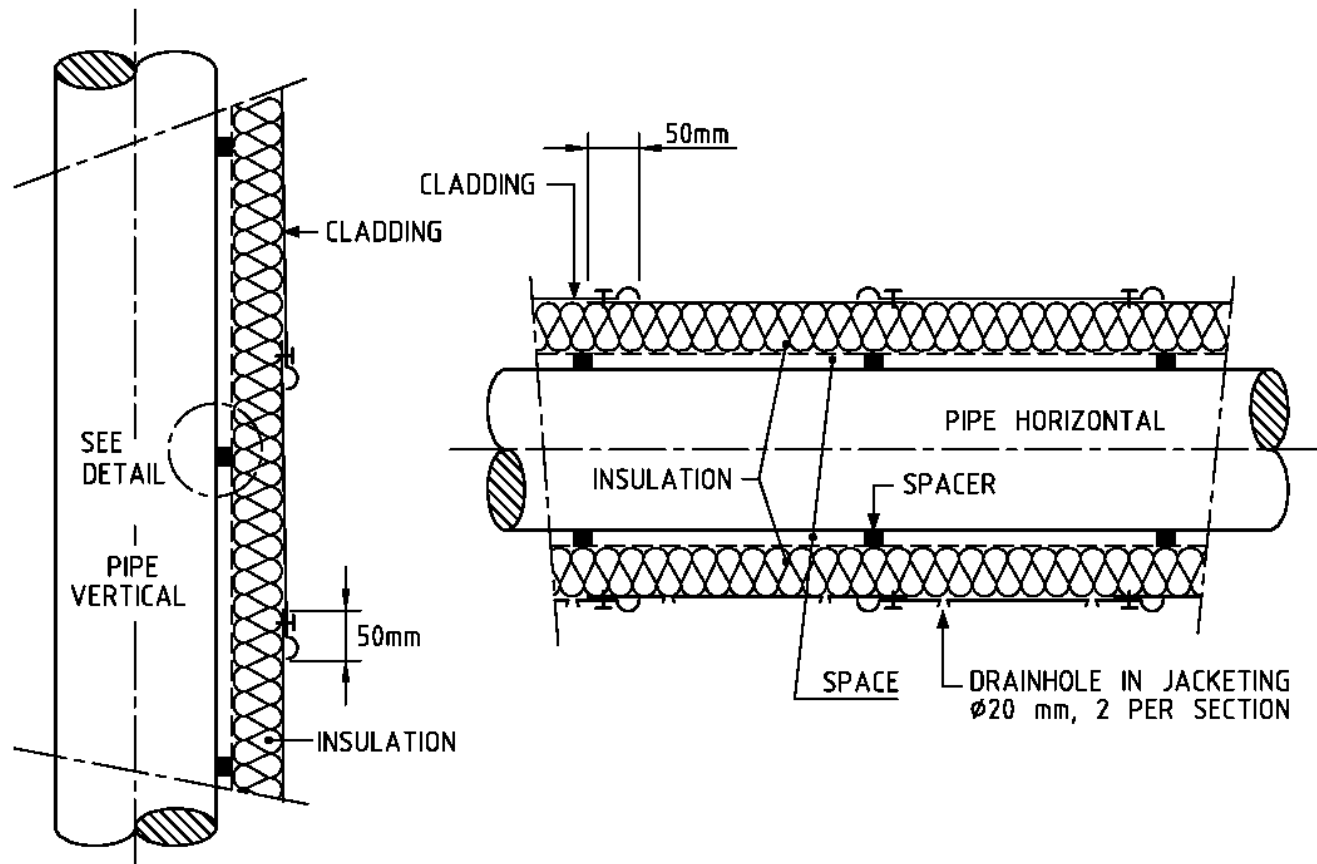
- > We can provide the insulation materials
- > We can provide the insulation skills
- > We want to test several insulation methods



TYPICAL INSULATED PIPE



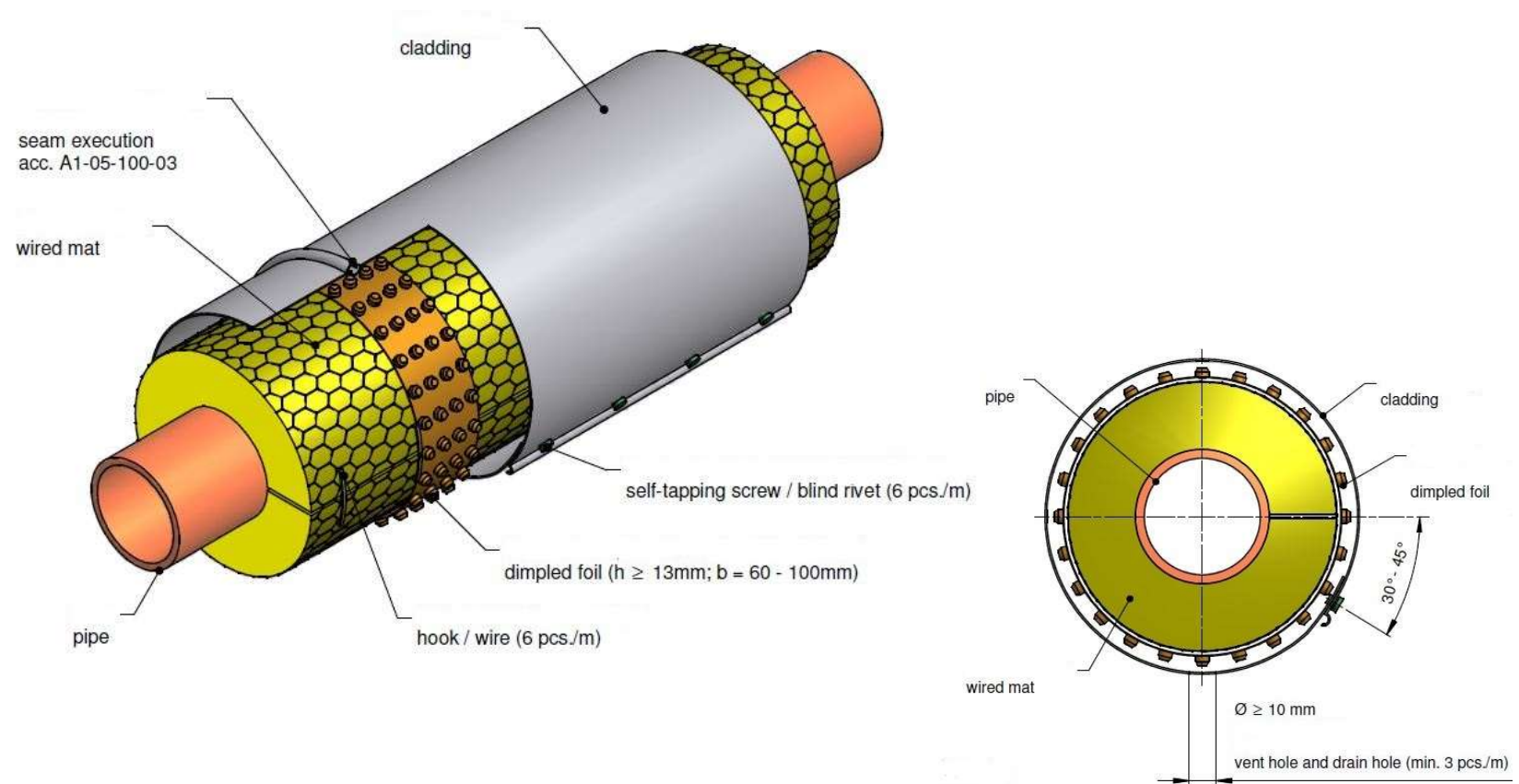
CINI - non contact Insulation



Statoil/CINI - non contact Insulation



German - non contact Insulation



NON CONTACT INSULATION

- > All concepts minimize the water accumulation on the metal surface and remove water through drain holes
- > CINI & Statoil concept reduce insulation effectiveness due to convection effects under the insulation layer
- > German distance insulation prevents water ingress from condensation on the inner side of the cladding into the insulation & insulation system is untouched

Drain Plugs

- > Generate heat loss and bear water ingress potential



WHAT DOES KAEFER GAIN FROM THE CORROSIELABS

- > We hope to contribute in a solution for the global CUI problem
- > We hope to raise awareness for the challenges we as insulators face
- > We hope to create interest in our profession



THANK YOU

Name of Presenter

T. +49 123 4567 8901

E. name.surname@kaefer.com