

NICE TO MEET YOU, WE ARE

FLUVES

WE CARE ABOUT YOUR INDUSTRIAL ASSETS. WE MONITOR THEM.



FLUVES

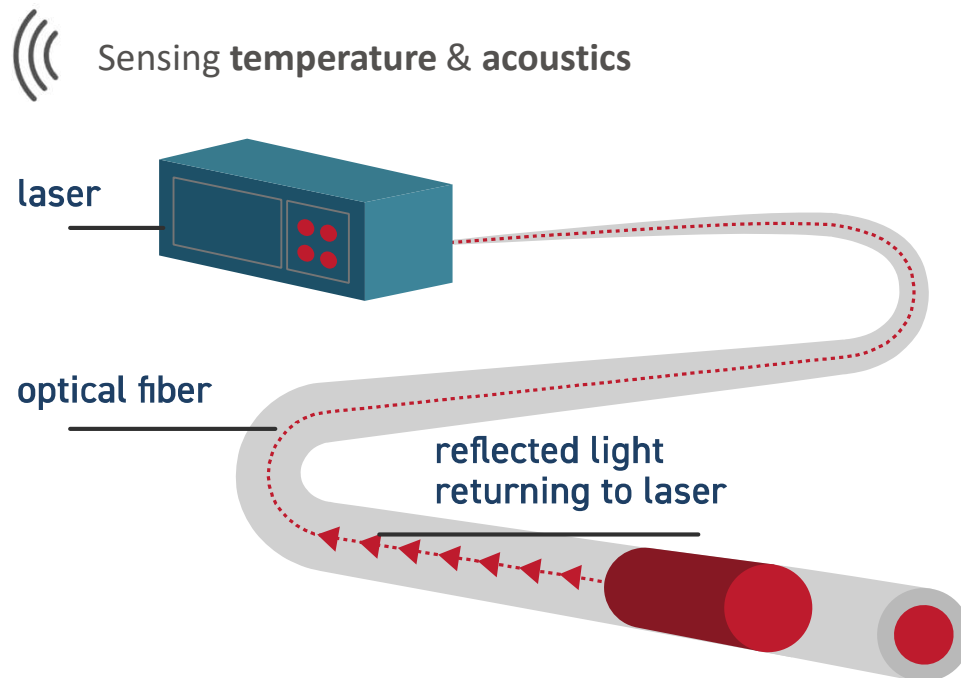
## FIBER OPTIC MONITORING TO PREVENT CORROSION UNDER INSULATION – CUI





FLUVES

## HOW DOES FIBER OPTIC MONITORING WORK?



ATEX PROOF

EXTREMELY LONG RANGES

HIGHLY ACCURATE

COST EFFECTIVE



FLUVES

## ONE ROBUST TELECOM FIBER EQUALS 1000 OF POINT SENSORS

*Point sensors aren't bad, but fiber optic sensing is just way better.*

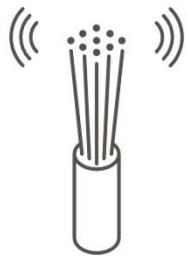
- **Stable set-up and technology**
- **Can stand the test of time**
- **Designed for harsh environments**  
all sensitive hardware is installed remotely.





FLUVES

YOU'RE ALL SET WITH OUR  
PREDICTIVE MAINTENANCE PLATFORMS



Fiber Optic  
Sensors



Gathering &  
analyzing data



Understandable  
dashboards

CUI-CONTROL

FLUVES







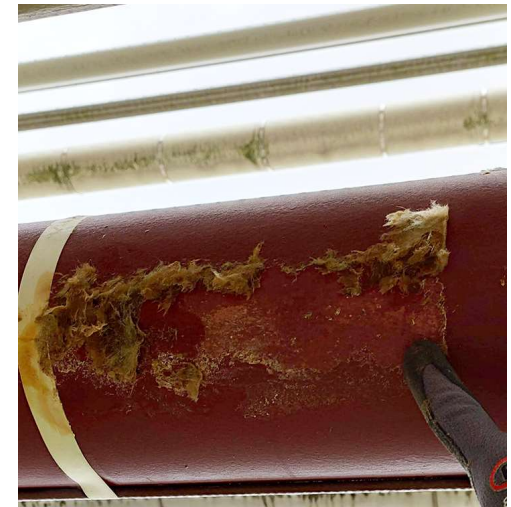
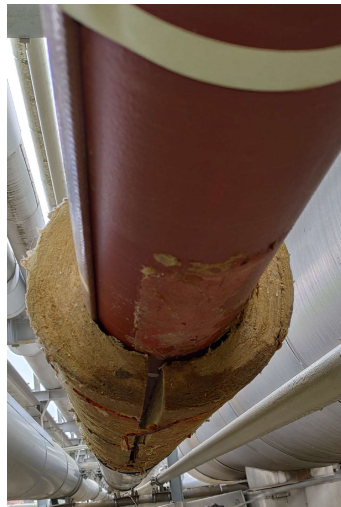
FLUVES





FLUVES

## CUI – CASE STUDY AT





## CUI INSTALLATION OF THE FIBER

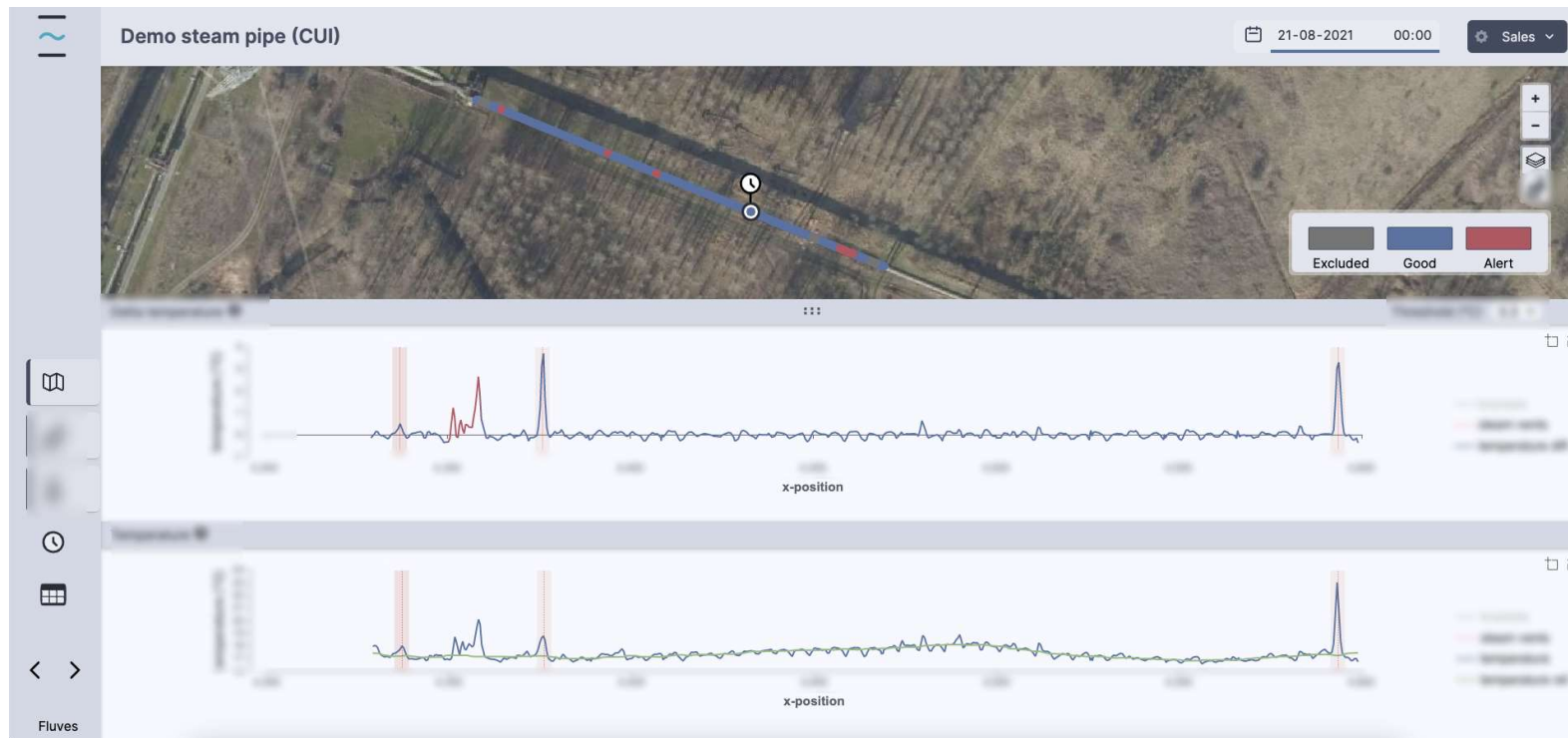
- A specialty optical fiber is attached along the whole length of the pipeline.
- It can be placed on the outside of the cladding. No need to dismantle anything.





FLUVES

## CUI – DASHBOARD



FLUVES

CUI-CONTROL

APPROVED BY

**BASF**  
We create chemistry

&

**LANXESS**  
Energizing Chemistry





Email us: [sales@fluves.com](mailto:sales@fluves.com)

Call us: +32 9 346 85 30



FLUVES

By talking to our clients,  
we are still discovering  
new industrial problems  
where fiber optic  
sensing seems to be  
the best solution.

SO LET'S TALK!



# FLUVES

WE CARE ABOUT YOUR CRITICAL EQUIPMENT. WE MONITOR IT.