

Quality digitalization @ terminals

Seminar KicMPI
Justin van Dael, MD

Eindhoven, 28/03/2023 R0.7



Terminal dynamics



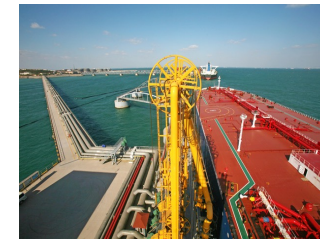
inbound



terminal (Blending & Storage)



outbound



Quality control

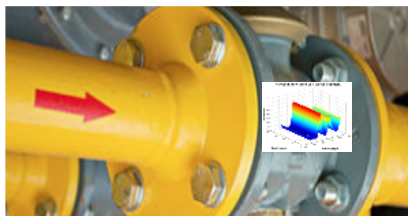


sampling



Today

process control



Tomorrow

Manual sampling



Health & safety:

- ✓ Personnel has to climb the tanks
- ✓ Personnel inhaling carcinogenic vapors
- ✓ Closed sampler system → physically very demanding
- ✓ Increased explosion risk



Representative:

- ✓ 1 liter representing 10.000+ m³ → False confidence



Increased cost:

- ✓ Needs resources (24/7)
- ✓ Gives delay's
- ✓ Increased logistics & travel with dangerous goods
- ✓ Lab analysis
- ✓ Samples → waste

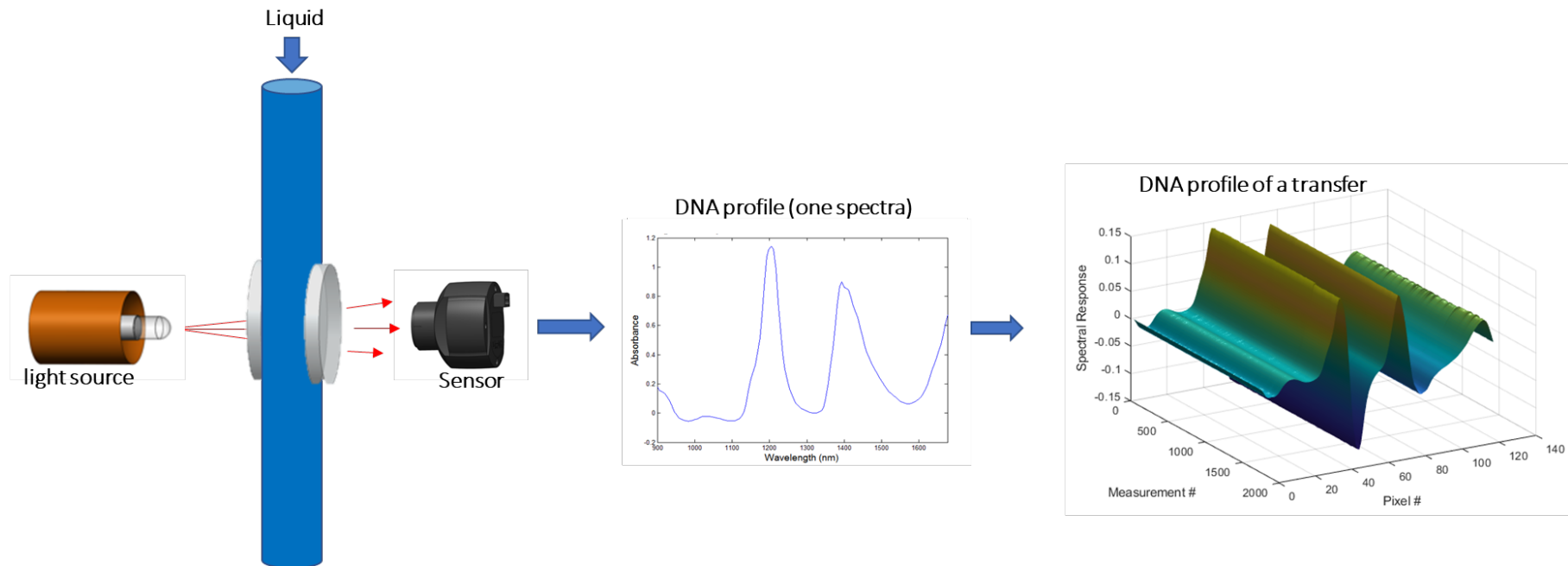


FuQon profile



See movie @ our website: Products
Link: <https://youtu.be/AoZr9X-k0Vc>

Technology – Near Infra Red (NIR)



Using mathematical data analysis methods such as multivariate modelling, the type and quality of liquids flowing through the measurement cell can be determined. The graph at the right site above shows a DNA profile of a complete transfer.

Q\Platform capabilities

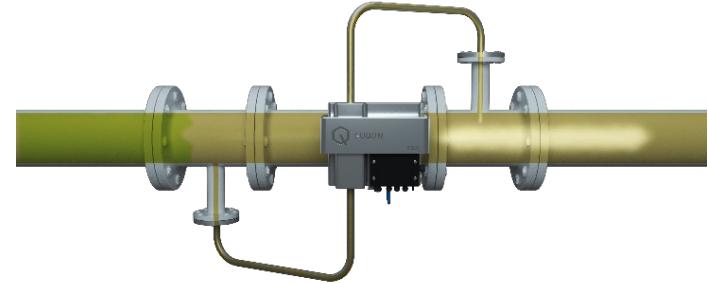


- ✓ Product classification (Naphtha/JET/Gasoil/...)
- ✓ Line displacement
- ✓ Measure density
- ✓ Measure haziness
- ✓ Detect contamination (> 1 vol%)
- ✓ Detect water (> 0.1 vol%)
- ✓ Detect batch anomalies

- ✓ DNA profiling → fingerprint of each batch

- ✓ Track & trace

- ✓ Optionally:
 - Real time sampling when anomalies are detected (closed system)



Q\Skid



Q\Cell



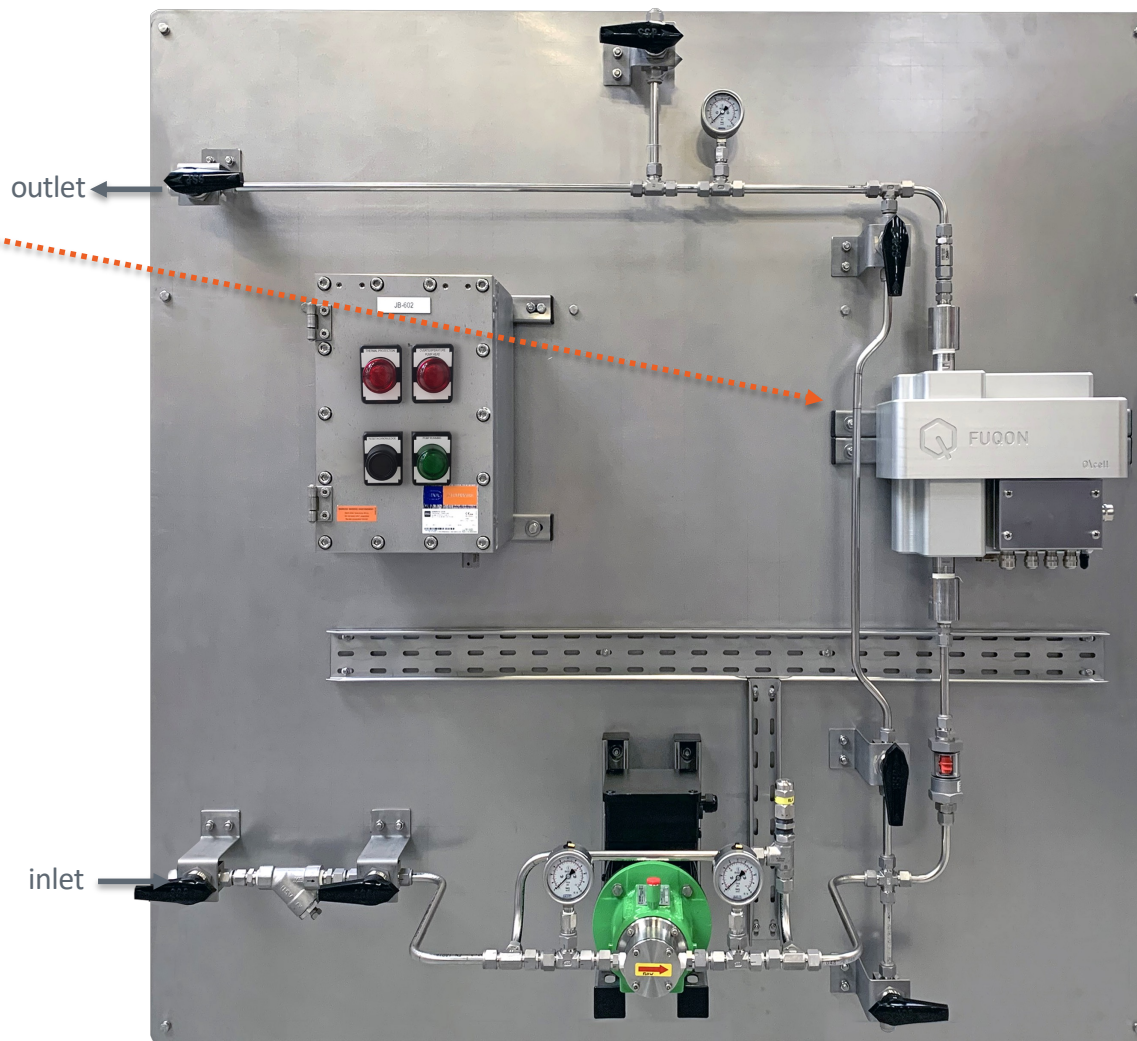
Q\Engine

Q\Skid

| | |
|--------------|------------------------|
| Inlet/outlet | : ½" inch |
| Power | : 380 VAC |
| Dimensions | : 1500 x 1500 x 400 mm |
| Weight | : 150 kg |
| ATEX / IECEx | : Zone 1 |








Q\Engine

| | |
|----------------|--------------------------------|
| Power | : 110-220 VAC |
| Dimensions | : 280 x 190 x 76 mm |
| Communication. | : RS-485 shielded twisted pair |



Features & benefits



| Feature | Benefit | NBA | Application |
|---|--|--|--|
| Real-time measurement  | Within one second quality information available | Manual sampling, lab analysis | Real-time process control Detecting anomalies |
| Continuous measurement  | Control of a complete transfer DNA profiling | Manual sampling, lab analysis (spot analysis) Density measurement | Detecting anomalies Line displacement/ Batch conformity |
| Quality information  | Product classification Contaminant classification Quantitative information | Manual sampling, lab analysis (spot analysis) Density measurement | Hardware lining-up Hardware conditioning Blending Detecting anomalies |
| Track & trace  | 100% data integrity All raw process data maintains available | Not applicable | Management reporting Root cause analysis Claim support Company image |
| Closed system  | Safety No environmental exposure No manual interference | Manual sampling with closed system | Applicable for all K1 products |
| Real-time sampling option  | Real-time burden of proof | None | Track & trace of anomalies |
| Self learning system  | Improvement of measurement results/ accuracy and capabilities over time | None | All |

Sustainability



Health & safety:

- ✓ Q\Skid limits manual sampling
- ✓ Q\Skid measures with a closed system.
- ✓ Integrated closed sampling unit
- ✓ Q\Skid reduces emission
- ✓ Decrease the risk of MIC (Microbiological Induced Corrosion)



Compliance:

- ✓ Track & trace, fluid to fluid
- ✓ REACH compliant
- ✓ Decrease fraud

Environment:

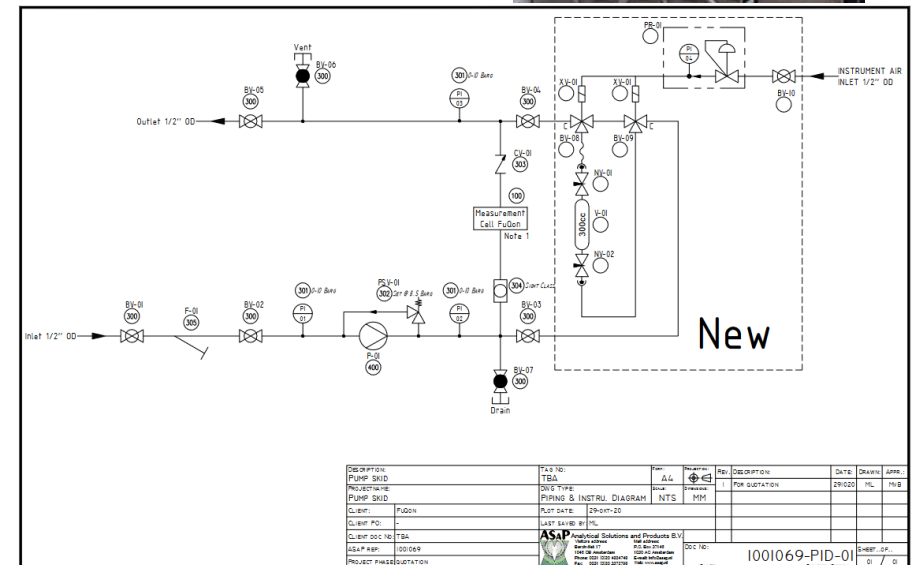
- ✓ Increased use of sustainable fuels (BIO / SAF / HVO)
- ✓ Reduce waste



Integrated closed sampling unit (optional)



- Sampler integration into Q\Skid
- Several samples can be taken
- Stainless steel bottles
- Closed system
- Product is continuously running through the sample bottle
- Sampling controlled by Q\Engine
- A sample is taken instantly in case an anomaly is detected by the Q



Sampler integration gives legal evidence in case of detected anomalies

Existing Q\Skid with sampler integration

Thanks

Fuqon BV

High Tech Campus 10
1081 HV Amsterdam
The Netherlands

T+31 (0) 40 851 64 77
info@fuqon.com

www.fuqon.com



FUQON